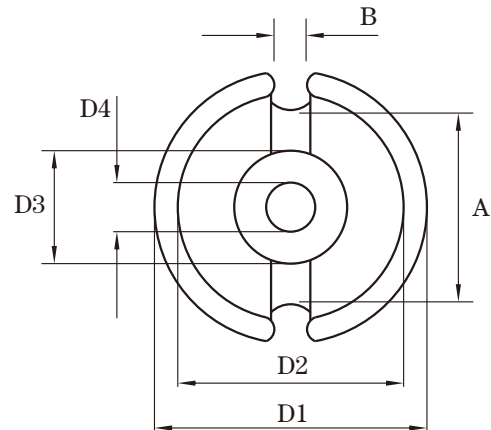
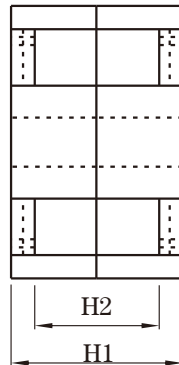


Dimension: (UNIT:mm)

D1	42.4 ± 0.7
D2	35.6+0.4
D3	17.7-0.6
D4	5.4+0.2
A	32 ± 0.7
B	5.1 ± 0.7
H1	29.4 ± 0.1
H2	20.3+0.4

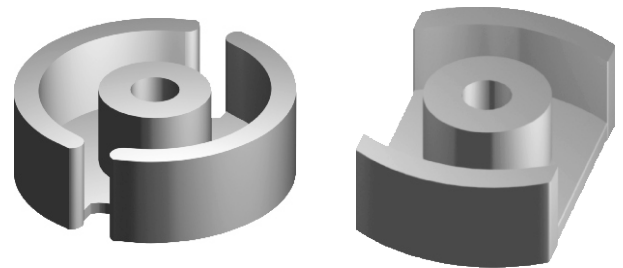


Test conditions

AL: F=1.0KHz U=0.3V N=10Ts

Effective parameter

C1(mm) ⁻¹	Ae(mm ²)	Le(mm)	Ve(mm ³)	Weight(g)
0.259	265.0	68.6	182000	≈ 108



Core sets for general purpose transformers and power applications.

Clamping force for Al measurements, 10+/-5N.

Grade	AL (nH)	μe	AIR GAP μm	Type number
P3	5800±25%		≈0	P4226-P3

Properties of core sets under power conditions

Grade	B (mT) at	Core loss (w) at			
	H=250 A/m F=25KHz T=100°C	F=25 KHz B=200mT T=100°C	f=100 KHz B=100mT T=100°C	F=100 KHz B=200 mT T=100°C	F=400 KHz B=50mT T=100°C
P3	≥330				

Note:

- 1: Document is the property of FUAN Inc & is not allow to be duplicated without authorization
- 2: RoHS compliant.